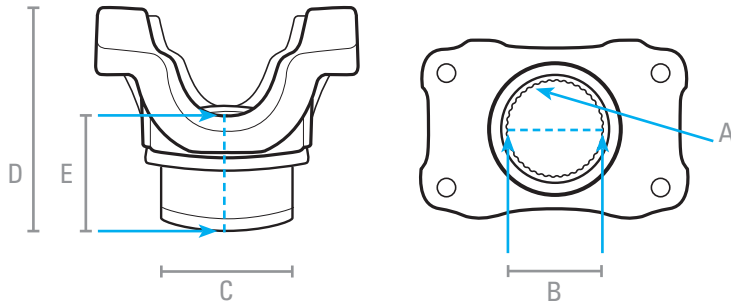




PINION YOKE IDENTIFIER

driveshaftpro.com

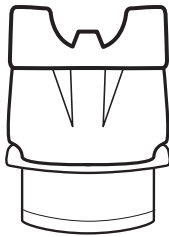
STEP 1 WHAT APPLICATION DOES IT FIT?



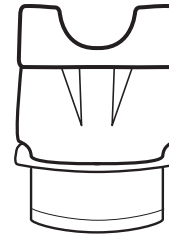
A. SPLINE COUNT: _____
B. I.D. OF SPLINE: _____
C. HUB O.D.: _____
D. OVERALL HEIGHT: _____
E. THROUGH HOLE: _____

STEP 2 IS THE YOKE AN OUTSIDE (OSR) OR INSIDE (ISR) SNAP RING?

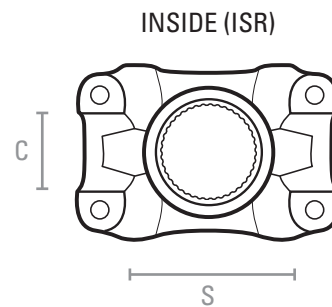
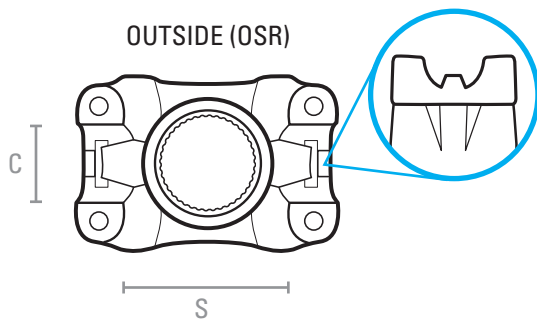
OUTSIDE (OSR)



INSIDE (ISR)



STEP 3 MEASURE BOTH THE STACK (S) AND CAP (C) DIAMETER & MATCH THE SERIES OF UJOINT.



SERIES	STACK	CAP
1210	2 7/16" = 2.438	1 1/16" = 1.063
1310	3 7/32" = 3.219	1 1/16" = 1.063
1310 FORD	3 7/32" = 3.219	1 1/8" = 1.125
1330	3 5/8" = 3.625	1 1/16" = 1.063
1330 FORD	3 5/8" = 3.625	1 1/8" = 1.125
1350	3 5/8" = 3.625	1 3/16" = 1.188
1410	4 3/16" = 4.188	1 3/16" = 1.188
1480	4 3/16" = 4.188	1 3/8" = 1.375
1550	4 31/32" = 4.969	1 3/8" = 1.375

SERIES	STACK	CAP
7260	2 1/8" = 2.125	1 5/64" = 1.078
7290	2 5/8" = 2.625	1 1/8" = 1.125
3R	2 9/16" = 2.563	1 1/8" = 1.125

PLEASE NOTE 7260 & 7290 ARE CHRYSLER SERIES AND 3R IS GM.